



USE OF VETIVER GRASS IN ORGANIC CULTIVATION OF AROMATIC CROPS

A 35 Acre Certified Organic Aromatic Farm

C.G HERBALS

Creating Quality Essential Oils Through Sustainable Agriculture

www.cgherbals.in / www.vetiver.in / www.sugandhim.com / www.nishantaromas.com



C.G HERBALS

Creating Quality Essential Oils Through Sustainable Agriculture



INTRODUCTION

CERTIFICATION PROCESS

SOIL EROSION

CONTAMINATION FROM PADDY FIELDS

CONCLUSION



C.G HERBALS

Creating Quality Essential Oils Through Sustainable Agriculture



INTRODUCTION

CERTIFICATION PROCESS

SOIL EROSION

CONTAMINATION FROM PADDY FIELDS

CONCLUSION



WHY ORGANIC?

- ✓ Even during unsure economic times, parts of the organic industry are still enjoying double-digit growth
- ✓ The fastest burgeoning part of the organic industry is in personal care, which of course, includes fragrances
- ✓ Potentially this represents major opportunities for manufacturers of organic essential oils
- ✓ Aroma chemicals will eventually fall into the category of products, which, as they become available as organic



District: Mahasamund (South-West)



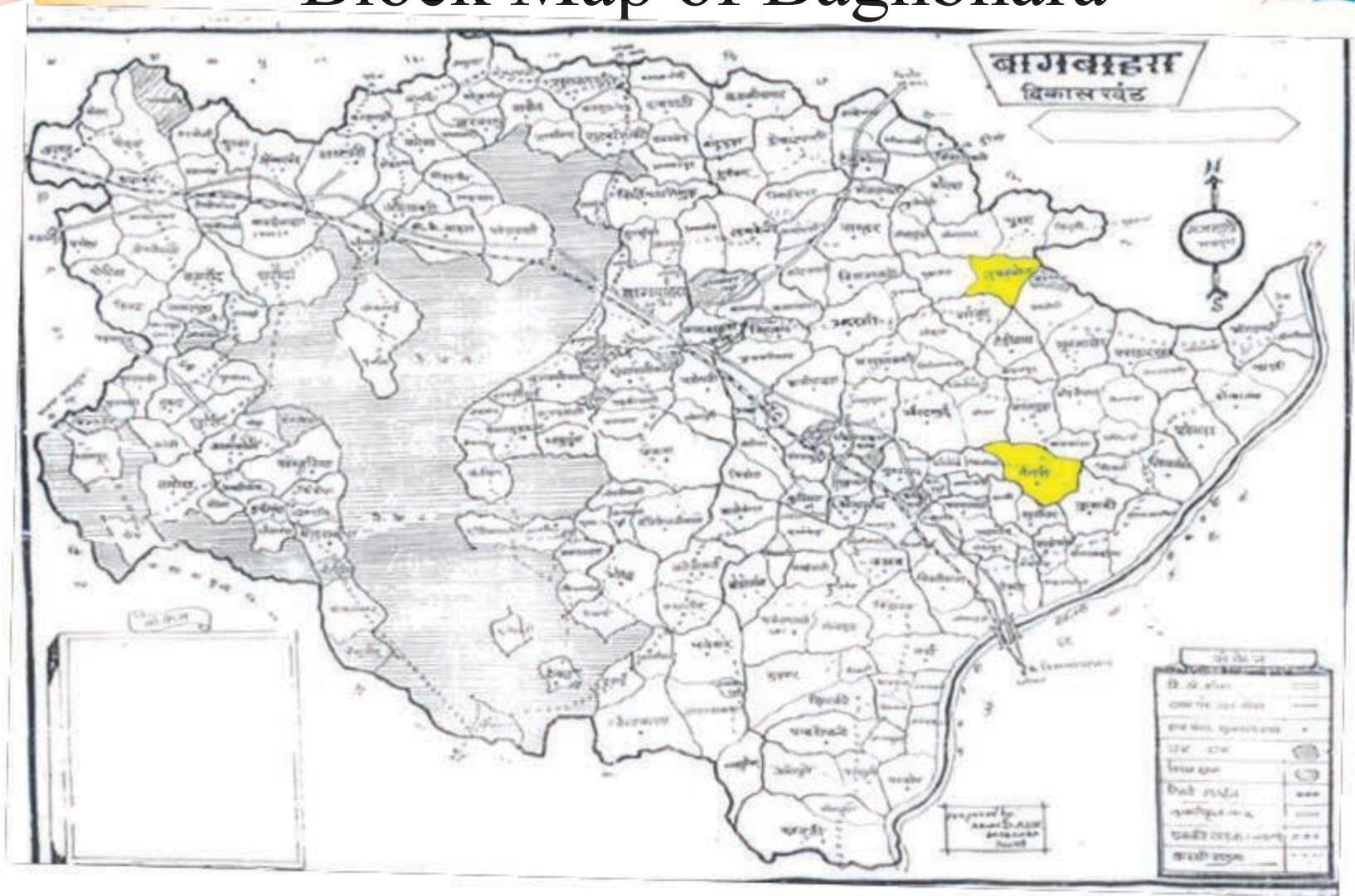


Tehsil: Baghbhara



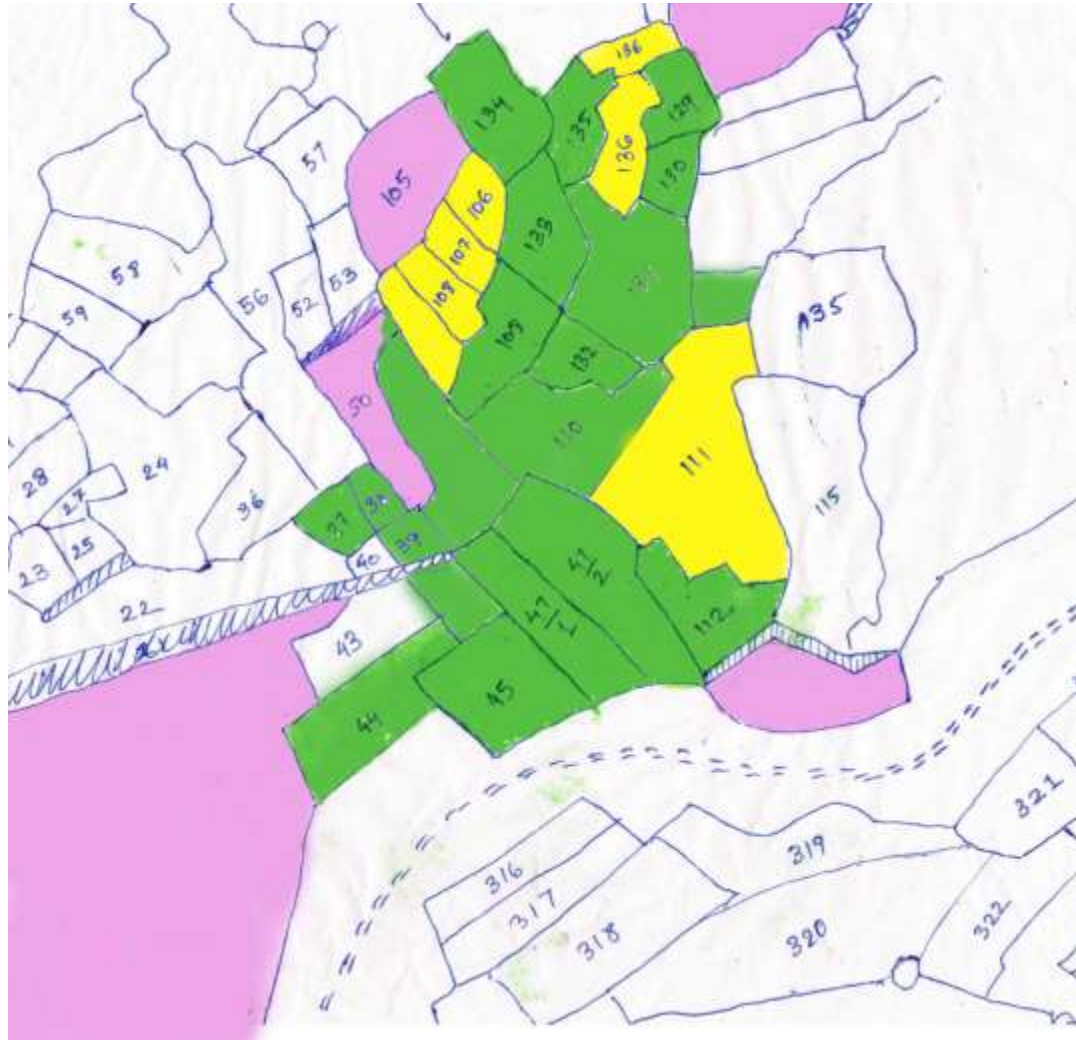


Block Map of Baghbhara





Revenue Village Map





Farm as on 7th June 2009





C.G HERBALS

Creating Quality Essential Oils Through Sustainable Agriculture



INTRODUCTION

CERTIFICATION PROCESS

SOIL EROSION

CONTAMINATION FROM PADDY FIELDS

CONCLUSION



CERTIFICATION PROCESS

During preliminary inspection of our farm in June 2009 the inspector indentified the following shortcomings in the land which we wanted to certify.

- ✓ The run-off water during monsoon led to large amount of earth being washed off in an adjacent water body.
- ✓ Presence of paddy fields in the vicinity which uses synthetic pesticide/fertilizer inputs posed a threat of cross contamination



C.G HERBALS

Creating Quality Essential Oils Through Sustainable Agriculture



INTRODUCTION

CERTIFICATION PROCESS

SOIL EROSION

CONTAMINATION FROM PADDY FIELDS

CONCLUSION



Leveling of land effected by erosion





Portion of farm affected by erosion





Vetiver Plantation in Process





Vetiver Plantation on effected land





Use of vetiver for stabilizing internal farm roads





Same plot after 1 year





1 Year Old vetiver harvested





1 year old vetiver harvested





Planting Material raised in plastic bags





Planting material raised in sacks





Vetiver used near septic tank





C.G HERBALS

Creating Quality Essential Oils Through Sustainable Agriculture



INTRODUCTION

CERTIFICATION PROCESS

SOIL EROSION

CONTAMINATION FROM PADDY FIELDS

CONCLUSION

C.G HERBALS

Creating Quality Essential Oils Through Sustainable Agriculture



Boundary between farm and adjacent paddy fields





C.G HERBALS

Creating Quality Essential Oils Through Sustainable Agriculture



INTRODUCTION

CERTIFICATION PROCESS

SOIL EROSION

CONTAMINATION FROM PADDY FIELDS

CONCLUSION



CONCLUSION

Use of vetiver thus enabled us overcome the following shortcomings which came in the way of certification process whereby granting our farm organic status in June 2010

- ✓ Vetiver reclaimed the entire patch of land which was prone to erosion by holding back the earth which otherwise got washed away in the nearby water body. It not only benefitted us also curtailed the recurring expense which gram panchayat used to spend on increasing the depth of pond every year.
- ✓ In presence of an inorganic field one has to keep a buffer zone of 50 m in order to avoid contamination however vetiver plantation on the borders were convincing enough to the inspector as a barrier which would act as a firewall between the fields.



C.G HERBALS

Creating Quality Essential Oils Through Sustainable Agriculture



Contact Us

Head Office

424 Milan Industrial Estate,

T.J Road Cotton Green,

Mumbai (MH) 400033 - India.

Phone: +91-22-24710058/24715565/24711431

Fax: +91-22-24716502

E-mail: nishantaromas@vsnl.com

Branch Office

C. G. Herbals

643-44, 6th Floor, Magneto Offizo,

Labhandi, NH-6, Raipur, Chhattisgarh-492011

Phone: +91-771-4041423

E-mail: cgherbals@gmail.com
